

# bimstore.co.uk

HERZ Valves UK Ltd  
14002-4 Differential Pressure  
Control Valve 5 -30kPA  
User Guide

Version 1.0    Revit 2013  
Nov 2015



## Loading the HERZ Valve into your project

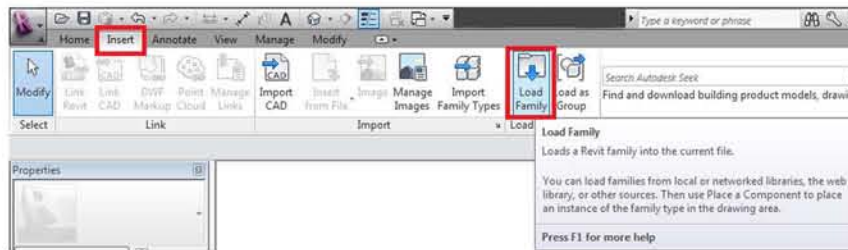
The HERZ 14002-4 Differential Pressure Control Valve 5 -30kPA is available in a range of sizes. A type catalogue has been set up to assist the user in selecting only the types they require for their project, meaning the project file size is kept to a minimum. The zip file which you have just downloaded from will contain two very important files to allow this type catalogue to work correctly, these are:

- the .rfa file (Revit family component)
- the .txt file of the exact same name ( contains the type catalogue information)

**IMPORTANT** - Please ensure that when saving the downloaded component onto your system that you save both files in the same location.

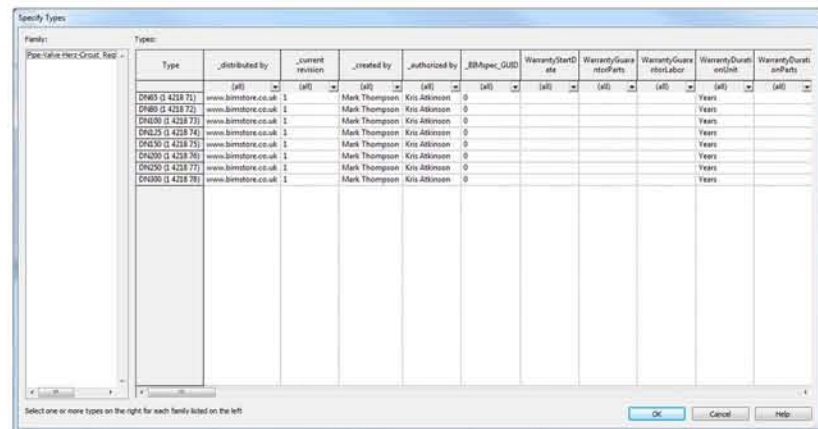
Please follow the below method to load the component into your project.

1. Open the Revit file containing your 'project' and navigate to an appropriate view.
2. Go to the 'Insert' tab on the Revit Ribbon and select 'Load Family'



3. Navigate to the location of the saved HERZ Valve component that you have just downloaded. Note - Please refer to the 'Type Catalogue' section above and ensure that the .txt file is saved in the correct location.

4. The type catalogue selector will now appear (see image below). Select the desired type/s from the scroll menu, the selected types will turn black once selected. To select multiple types hold Shift or Ctrl.

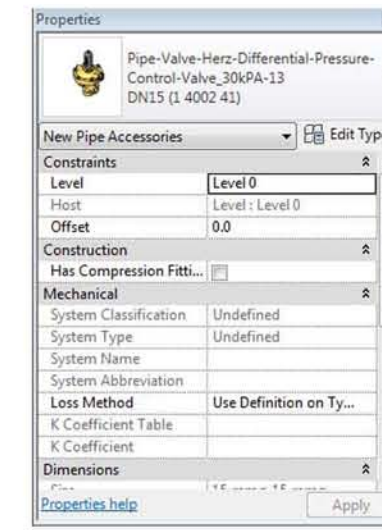


5. Click OK to load these components into your project. The family is now copied and embedded into your project and can be selected from the components button on the main Revit Ribbon.

## Using the HERZ Valve component additional features

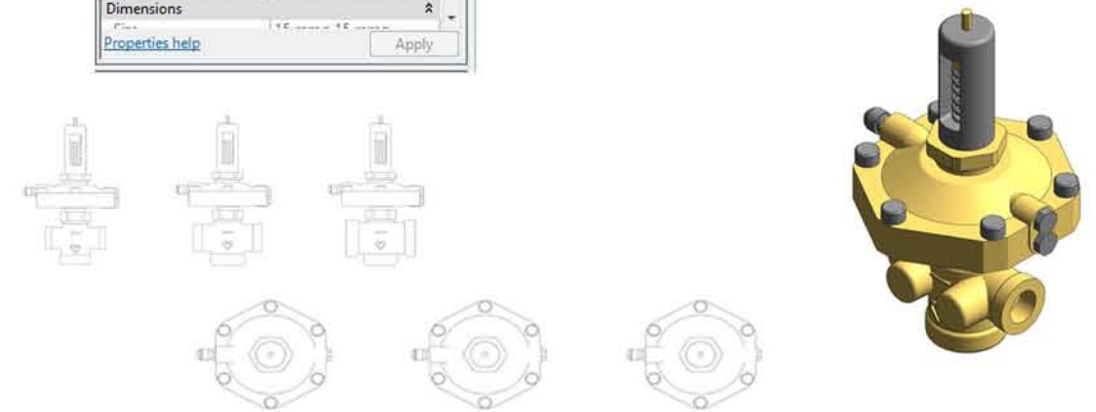
The HERZ Valve components have a number of additional built-in features to assist the user when specifying and placing the BIM component, these include manufacturer approved swing zones as well as user selectable features such as orifice plates and header options. To use these additional features please follow the steps below;

1. With the component loaded and positioned in your project select the Herz Valve component. Once selected the 'Properties' dialogue box will appear (typically on the left hand side of the screen).



2. Scroll down the 'Properties' dialogue box until you reach the heading 'Construction' as illustrated. Here you have a number of selectable / adjustable features for the valve component including compression end fittings, user selectable options and the cswing zones.

3. Tick on or off the selected option for and click 'Apply' to activate it.



## Other Notes

You can add the HERZ 14002-4 Differential Pressure Control Valve 5 -30kPA component to your company template file, they will then be available without loading when starting a new project.

## Revision

Version 1.0 - First Issue

**bimstore.co.uk**

North East  
Spaceworks  
Benton Park Road  
Newcastle Upon Tyne  
NE7 7LX

T: +44 (0)191 223 6600  
F: +44 (0)191 223 6610